



THE NATIONAL ASSOCIATION OF REALTORS® RELOCATION REPORT

Item #187- 13135

Gwinnett County , GA

2008



©2010 THE NATIONAL ASSOCIATION OF REALTORS®. Reproduction, reprinting or retransmission in whole or in part is prohibited without written permission.



NATIONAL ASSOCIATION OF REALTORS®

The Voice For Real Estate®



Win More Clients and Gain More Referrals with NAR *RELOCATION* REPORT!

What is the NAR *RELOCATION* REPORT?

The **NAR *RELOCATION* REPORT** series pinpoints where relocation clients are coming from and where they're going, on a county-to-county basis. In addition, it highlights the median incomes of households arriving and leaving each county. For example, the Palm Beach County, Florida report shows how many households moved in from New York County (NY), Bucks County (PA) and Bergen County (NJ), along with the median income of those relocating households.

Who is using the NAR *RELOCATION* REPORT?

Real Estate Professionals, Relocation Companies, Market Trend Analysts, City and Community Planners

How do real estate professionals use the NAR *RELOCATION* REPORT?

There are two primary ways that real estate practitioners are using the **NAR *RELOCATION* REPORT** to expand their business opportunities.

1) Advertise and Win Clients in those counties that are likely to relocate to the markets you serve. For example, suppose that you practice real estate in Phoenix (AZ) and the top three counties relocating to Phoenix are Essex County (NJ), Hampden County (MA), and Kings County (NY), and the median income of those relocating to Phoenix is significantly above the national average. Then selective advertising aimed at the affluent target audience should yield significant leads.

2) Referrals, Referrals, Referrals! Create and/or utilize your firm's referral network by advertising real estate services for those counties in which there is strong relocation demand. For example, each year more than 4,000 households relocate from Los Angeles County (CA) to Clark County (NV). If you practice real estate in Clark County (NV), it would be beneficial to advertise your partnered services in Los Angeles County (CA), in order to acquire referrals.

Methodology for NAR *RELOCATION* REPORT

Data for this report was obtained from the Internal Revenue Service (IRS) and is based on individual income tax returns filed by citizens and resident aliens. Only the tax returns for which the social security number of the primary taxpayer reported on the return in one year matched the social security number reported on the return filed in the previous year are included in the statistics. County-to-county migration is measured by the year-to-year changes of the county address codes in filed tax returns. If the county address was the same, then the taxpayer was counted as a "non-mover."

Note> Since the IRS data only tracks tax filers, it does not capture the whole population changes in a county. However, it may be of even more value to real estate professionals. Because tax deduction on the mortgage interest provides an incentive for homeowners to file tax returns to reap the benefits and the movements of those are included in the IRS data. On the other hand, the non-taxpayers, mostly newly arriving immigrants and low-income households, are the least likely groups to purchase a home.

Key Real Estate Statistics in 2007

MIGRATION STATISTICS	# of Households	Average Income
Total Non-Migrants	240,004	\$64,100
Non-Movers	217,508	
Movers w/in County	22,496	
Total In-Migrants	25,900	\$39,400
From the Same State	14,065	\$37,300
From Other State	11,835	\$41,900
Total Out-Migrants	24,442	\$46,500
To the Same State	15,442	\$45,700
To Other State	9,000	\$47,800

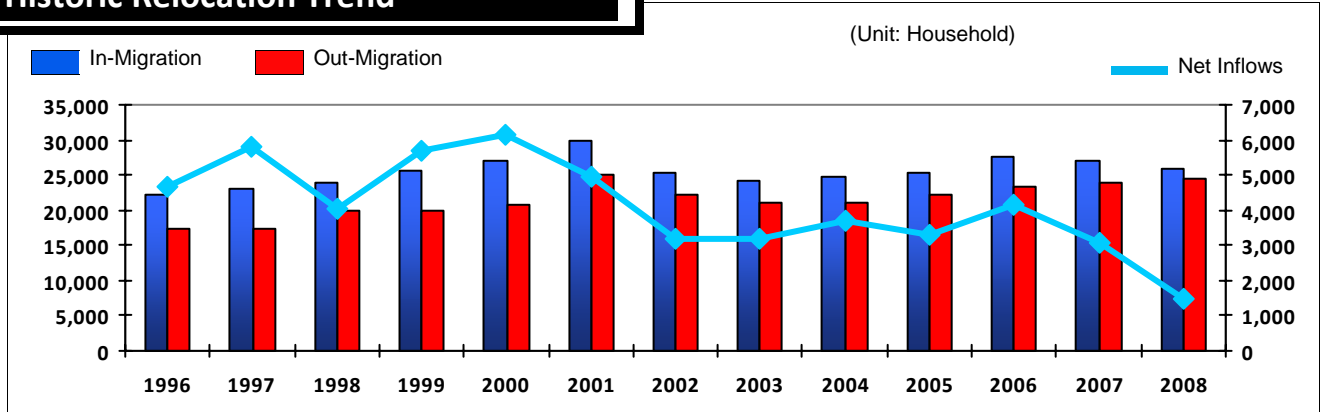
HOMEOWNERSHIP RATE		74%	
Hispanic	54%	Black*	60%
AIAN*	65%	NHPI*	81%
Asian	80%	White	83%

HOME SALES W/ MORTGAGES	8,877
Conventional Loans	5,306
FHA Guaranteed Loans	3,276
VA Guaranteed Loans	295
FHS/RHS Loans Loans	NA
2nd Home Share	10 %
FHS/RHS Loans Loans	2 %

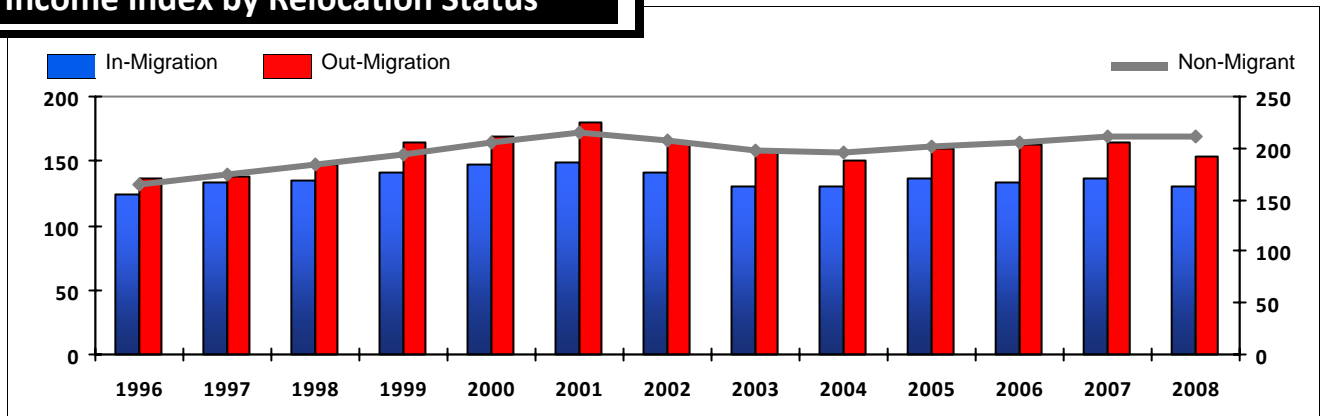
Source: Census Bureau 2009, IRS 2009, HMDA 2008, NAR 2009

* Black - Black or African American AIAN - American Indian and Alaska Native NHPI - Native Hawaiian and Other Pacific Islander

Historic Relocation Trend



Income Index by Relocation Status



** **Income Index** is measured by the relative level of median household income of a certain resident group compared to the national median income of non-movers in 2000. The income statistics used are those reported on annual tax filing to IRS.

Migration Counties In/Out of Gwinnett County, GA in 2008

Coming from			Going to							
State	County	# of Households	Income Index **	Distance ***	State	County	# of Households	Income Index	Distance	
1	GA	DeKalb County	5,180	118	18	GA	DeKalb County	3,825	117	18
2	GA	Fulton County	2,650	143	28	GA	Fulton County	2,947	161	28
3	GA	Cobb County	1,010	128	32	GA	Barrow County	1,157	127	18
4	GA	Hall County	554	133	27	GA	Hall County	1,018	184	27
5	GA	Barrow County	481	112	18	GA	Cobb County	1,016	130	32
6	FL	Broward County	463	132	582	GA	Walton County	838	176	21
7	GA	Walton County	462	127	21	GA	Forsyth County	698	246	19
8	GA	Clayton County	385	104	35	GA	Jackson County	465	210	29
9	FL	Miami-Dade County	377	106	625	GA	Clayton County	370	86	35
10	GA	Cherokee County	344	76	33	GA	Cherokee County	250	173	33
11	NY	Queens County	306	116	731	GA	Rockdale County	231	119	21
12	GA	Forsyth County	283	166	19	GA	Henry County	222	128	36
13	CA	Los Angeles County	271	114	1,975	GA	Clarke County	219	94	38
14	NY	Kings County	245	112	723	CA	Los Angeles County	199	76	1,975
15	GA	Rockdale County	243	130	21	GA	Newton County	178	107	30
16	GA	Clarke County	216	99	38	FL	Miami-Dade County	160	83	625
17	GA	Henry County	212	127	36	TX	Harris County	157	302	730
18	GA	Newton County	187	106	30	FL	Broward County	153	122	582
19	NY	Bronx County	187	117	737	GA	Douglas County	138	145	47
20	FL	Palm Beach County	181	123	550	IL	Cook County	131	127	584
21	FL	Orange County	176	124	410	NC	Mecklenburg County	119	182	203
22	GA	Jackson County	175	120	29	NY	Queens County	109	63	731
23	IL	Cook County	165	132	584	FL	Orange County	103	145	410
24	NY	Nassau County	141	122	742	AL	Jefferson County	102	142	169
25	FL	Hillsborough County	129	175	430	FL	Hillsborough County	101	174	430
26	GA	Douglas County	123	115	47	GA	Paulding County	95	172	49
27	TX	Harris County	114	134	730	NY	Kings County	90	80	723
28	NC	Mecklenburg County	111	158	203	NC	Wake County	88	228	331
29	MI	Wayne County	110	114	579	TX	Dallas County	88	128	745
30	FL	Duval County	105	143	287	SC	Greenville County	86	283	115
31	NY	Suffolk County	105	134	810	LA	Orleans Parish	85	60	441
32	NJ	Essex County	99	102	716	GA	Chatham County	84	133	217
33	FL	Pinellas County	96	118	422	FL	Duval County	79	154	287
34	GA	Chatham County	92	102	217	AZ	Maricopa County	76	160	1,643
35	CA	San Diego County	88	134	1,889	TN	Davidson County	73	135	219
36	MD	Prince George's County	87	116	524	FL	Palm Beach County	71	147	550
37	NJ	Middlesex County	87	150	695	NY	Bronx County	71	64	737
38	GA	Muscogee County	86	123	112	TX	Tarrant County	71	153	775
39	AL	Jefferson County	84	128	169	GA	Oconee County	70	253	35
40	AZ	Maricopa County	84	186	1,643	GA	Carroll County	69	105	66
41	TN	Shelby County	83	136	346	NY	New York County	67	137	724
42	NY	Westchester County	77	144	746	CA	Orange County	66	148	1,938
43	NY	New York County	73	158	724	NV	Clark County	66	178	1,759

** **Income Index** is measured by the relative level of median household income of a certain resident group compared to the national median income of non-movers in 2000. The income statistics used are those reported on annual tax filing to IRS.

*** **Distance** is calculated any two zip codes within the two counties and therefore may not necessarily match with the actual driving distance.

Migration Counties In/Out of Gwinnett County, GA in 2008 ... (continued)

Coming from			Going to							
State	County		# of	Income **		State	County	# of	Income	
			Households	Index	Distance***			Households	Index	Distance
44	CA	Orange County	71	246	1,938	GA	Habersham County	63	176	54
45	GA	Richmond County	71	98	120	GA	Coweta County	62	161	60
46	TX	Dallas County	70	116	745	GA	Muscogee County	62	132	112
47	MD	Montgomery County	68	125	522	CA	San Diego County	61	180	1,889
48	GA	Bibb County	67	129	82	GA	Bibb County	61	169	82
49	NV	Clark County	67	155	1,759	FL	Pinellas County	59	147	422
50	VA	Fairfax County	67	168	505	WA	King County	58	238	2,189
51	FL	Lee County	66	120	519	GA	Richmond County	57	90	120
52	NC	Wake County	66	155	331	VA	Fairfax County	56	177	505
53	NJ	Bergen County	64	202	731	GA	Fayette County	55	152	47
54	GA	Paulding County	63	143	49	TN	Shelby County	54	170	346
55	FL	Leon County	62	101	243	GA	Lumpkin County	52	193	42
56	FL	Seminole County	62	140	400	GA	Houston County	48	119	106
57	MI	Oakland County	62	148	604	TX	Collin County	47	212	729
58	TN	Davidson County	62	111	219	AL	Madison County	45	177	155
59	GA	Coweta County	60	150	60	LA	Jefferson Parish	45	214	473
60	NJ	Union County	59	150	708	SC	Beaufort County	45	161	221
61	SC	Greenville County	57	109	115	GA	White County	44	163	50
62	OH	Cuyahoga County	54	169	534	MD	Montgomery County	44	118	522
63	NJ	Passaic County	53	89	725	LA	East Baton Rouge Parish	43	128	480
64	CT	Fairfield County	52	122	772	AL	Mobile County	42	89	342
65	GA	Fayette County	52	100	47	OH	Franklin County	42	186	420
66	MD	Baltimore County	52	306	560	SC	Richland County	42	113	180
67	OH	Franklin County	52	126	420	MD	Prince George's County	41	129	524
68	CA	San Bernardino County	49	152	1,835	TN	Knox County	41	151	141
69	CT	Hartford County	48	135	822	AL	Shelby County	40	221	160
70	NC	Guilford County	48	152	282	FL	Seminole County	40	146	400
71	PA	Philadelphia County	48	87	646	GA	Bartow County	40	90	51
72	TN	Hamilton County	48	129	107	SC	Charleston County	40	114	249
73	FL	Collier County	47	70	567	GA	Banks County	39	133	41
74	TN	Knox County	47	126	141	GA	Lowndes County	39	118	221
75	GA	Carroll County	46	82	66	NC	Cumberland County	39	105	307
76	GA	Dougherty County	45	186	169	FL	Escambia County	38	98	301
77	IL	Dupage County	45	156	591	FL	Polk County	38	163	439
78	NY	Monroe County	44	108	723	GA	Madison County	38	173	48
79	AL	Montgomery County	43	108	176	TN	Hamilton County	38	132	107
80	CA	Riverside County	43	146	1,837	AL	Montgomery County	37	153	176
81	GA	Houston County	43	138	106	FL	Lee County	37	109	519
82	MO	St. Louis County	43	175	484	GA	Dawson County	37	197	34
83	SC	Richland County	43	144	180	GA	Morgan County	37	406	40
84	VA	Virginia Beach City	43	114	491	MN	Hennepin County	37	143	917
85	NY	Erie County	42	134	675	CA	Santa Clara County	36	188	2,123
86	PA	Allegheny County	42	151	503	NY	Nassau County	36	109	742

** **Income Index** is measured by the relative level of median household income of a certain resident group compared to the national median income of non-movers in 2000. The income statistics used are those reported on annual tax filing to IRS.

*** **Distance** is calculated any two zip codes within the two counties and therefore may not necessarily match with the actual driving distance.

Migration Counties In/Out of Gwinnett County, GA in 2008 ... (contined)

Coming from			Going to							
State	County		# of	Income **		State	County	# of	Income	Distance
			Households	Index	Distance***			Households	Index	Distance
87	TX	Tarrant County	42	118	775	FL	Pasco County	34	159	404
88	FL	Pasco County	41	134	404	NC	Guilford County	34	113	282
89	FL	Polk County	41	118	439	TX	Bexar County	34	233	915
90	NJ	Hudson County	41	90	721	CA	San Bernardino County	33	122	1,835
91	FL	Volusia County	40	175	380	GA	Columbia County	33	238	106
92	LA	Jefferson Parish	40	93	473	GA	Spalding County	33	131	51
93	MA	Middlesex County	40	144	906	FL	Brevard County	32	218	439
94	GA	Lowndes County	39	86	221	NY	Suffolk County	31	101	810
95	IN	Marion County	39	162	420	OH	Cuyahoga County	31	117	534
96	GA	Bartow County	38	155	51	VA	Prince William County	31	134	493
97	GA	Bulloch County	38	100	172	DC	District of Columbia	30	125	520
98	RI	Providence County	38	96	873	MA	Middlesex County	30	250	906
99	LA	Terrebonne Parish	37	77	514	CA	Riverside County	28	114	1,837
100	MN	Hennepin County	37	98	917	FL	Lake County	28	178	386
101	FL	Okaloosa County	36	115	273	GA	Bulloch County	28	110	172
102	MI	Kent County	36	119	635	MI	Oakland County	28	213	604
103	VA	Prince William County	36	183	493	SC	Anderson County	28	120	89
104	AL	Madison County	35	182	155	VA	Virginia Beach City	28	136	491
105	CA	Alameda County	35	194	2,130	CA	Alameda County	27	175	2,130
106	CA	Santa Clara County	35	217	2,123	FL	Alachua County	27	206	313
107	MA	Suffolk County	35	160	913	FL	Bay County	27	106	273
108	NC	Cumberland County	35	118	307	OH	Hamilton County	27	133	364
109	WA	King County	35	128	2,189	WA	Pierce County	27	124	2,183
110	FL	Brevard County	34	128	439	GA	Hart County	26	252	67
111	MD	Baltimore City	34	94	554	GA	Pickens County	26	602	43
112	WI	Milwaukee County	33	108	663	NJ	Essex County	26	45	716
113	FL	St. Lucie County	32	102	504	PA	Allegheny County	26	145	503
114	GA	Baldwin County	32	106	76	TX	Denton County	26	213	760
115	GA	Oconee County	32	115	35	FL	St. Johns County	25	408	320
116	MD	Anne Arundel County	31	161	542	IL	Dupage County	25	372	591
117	MI	Genesee County	31	119	629	IN	Marion County	25	82	420
118	AL	Lee County	30	115	122	MD	Baltimore City	25	98	554
119	FL	Alachua County	30	91	313	MI	Wayne County	25	111	579
120	FL	Escambia County	30	101	301	MO	St. Louis County	25	191	484
121	AL	Mobile County	29	90	342	NJ	Bergen County	25	107	731
122	FL	Bay County	29	123	273	NC	Buncombe County	25	150	143
123	GA	Habersham County	29	110	54	OK	Oklahoma County	25	106	771
124	GA	Troup County	29	92	87	PA	Philadelphia County	25	92	646
125	OH	Hamilton County	29	100	364	SC	Lexington County	25	181	159
126	DC	District of Columbia	28	135	520	SC	Spartanburg County	25	153	135
127	FL	Manatee County	28	263	461	TX	Fort Bend County	25	212	761
128	GA	Lumpkin County	28	108	42	CO	El Paso County	24	191	1,190
129	NJ	Morris County	28	648	708	FL	Leon County	24	143	243

** **Income Index** is measured by the relative level of median household income of a certain resident group compared to the national median income of non-movers in 2000. The income statistics used are those reported on annual tax filing to IRS.

*** **Distance** is calculated any two zip codes within the two counties and therefore may not necessarily match with the actual driving distance.

Migration Counties In/Out of Gwinnett County, GA in 2008 ... (continued)

Coming from			Going to							
State	County		# of	Income **		State	County	# of	Income	
			Households	Index	Distance ***			Households	Index	Distance
130	OH	Montgomery County	28	99	402	FL	Volusia County	24	379	380
131	VA	Norfolk City	28	73	484	KY	Jefferson County	24	130	307
132	CO	Arapahoe County	27	121	1,218	TX	Montgomery County	24	322	723
133	CT	New Haven County	27	117	797	TX	Travis County	24	180	850
134	GA	Spalding County	27	115	51	WI	Milwaukee County	24	131	663
135	LA	Orleans Parish	27	70	441	FL	Osceola County	23	79	444
136	NJ	Burlington County	27	219	661	GA	Baldwin County	23	89	76
137	NY	Orange County	27	170	741	GA	Jasper County	23	156	49
138	NC	Onslow County	27	98	382	MD	Anne Arundel County	23	173	542
139	SC	Charleston County	27	165	249	MD	Baltimore County	23	126	560
140	TX	Denton County	27	205	760	SC	Oconee County	23	328	78
141	AL	Shelby County	26	265	160	TN	Rutherford County	23	161	189
142	GA	Hart County	26	123	67	GA	Stephens County	22	122	59
143	KY	Jefferson County	26	207	307	HI	Honolulu County	22	139	5,035
144	NC	Forsyth County	26	108	262	MA	Suffolk County	22	78	913
145	PA	Delaware County	26	166	631	NC	Durham County	22	144	326
146	SC	Beaufort County	26	90	221	NC	Onslow County	22	60	382
147	VA	Loudoun County	26	194	503	TN	Williamson County	22	277	212
148	GA	Columbia County	25	99	106	UT	Salt Lake County	22	203	1,600
149	GA	Liberty County	25	78	209	CO	Arapahoe County	21	146	1,218
150	MD	Howard County	25	172	539	CO	Denver County	21	119	1,222
151	MA	Norfolk County	25	154	909	CT	Fairfield County	21	145	772
152	TX	Travis County	25	215	850	GA	Franklin County	21	500	54
153	DE	New Castle County	24	158	609	NJ	Hudson County	21	150	721
154	GA	Glynn County	24	89	239	NY	Westchester County	21	239	746
155	HI	Honolulu County	24	135	5,035	VA	Chesterfield County	21	285	433
156	LA	Lafourche Parish	24	87	487	AL	Calhoun County	20	114	105
157	MA	Worcester County	24	203	879	FL	Okaloosa County	20	141	273
158	MI	Washtenaw County	24	155	575	LA	St. Tammany Parish	20	92	428
159	NY	Rockland County	24	229	741	PA	Montgomery County	20	325	645
160	PA	Montgomery County	24	158	645	AL	Lee County	19	98	122
161	CA	Sacramento County	23	88	2,097	CA	Sacramento County	19	112	2,097
162	FL	Osceola County	23	128	444	CT	Hartford County	19	141	822
163	GA	Dawson County	23	134	34	FL	Manatee County	19	164	461
164	MI	Macomb County	23	139	609	GA	Gilmer County	19	169	56
165	SC	Lexington County	23	167	159	GA	Putnam County	19	333	58
166	SC	Spartanburg County	23	187	135	GA	Troup County	19	115	87
167	VA	Chesterfield County	23	177	433	TX	Hidalgo County	19	86	1,003
168	VA	Chesapeake City	23	138	476	VA	Henrico County	19	200	448
169	AR	Pulaski County	22	115	479	VA	Loudoun County	19	232	503
170	FL	Marion County	22	132	349	AL	Baldwin County	18	288	313
171	GA	Whitfield County	22	84	80	FL	Collier County	18	112	567
172	MA	Essex County	22	124	931	GA	Dougherty County	18	62	169

** **Income Index** is measured by the relative level of median household income of a certain resident group compared to the national median income of non-movers in 2000. The income statistics used are those reported on annual tax filing to IRS.

*** **Distance** is calculated any two zip codes within the two counties and therefore may not necessarily match with the actual driving distance.

Migration Counties In/Out of Gwinnett County, GA in 2008 ... (continued)

Coming from			Going to							
State	County	# of Households	Income Index **	Distance ***	State	County	# of Households	Income Index	Distance	
173	NJ	Monmouth County	22	133	695	GA	Floyd County	18	96	72
174	FL	Lake County	21	154	386	GA	Glynn County	18	293	239
175	FL	Martin County	21	122	524	GA	Greene County	18	720	56
176	GA	Banks County	21	138	41	GA	Union County	18	221	61
177	IL	Will County	21	210	562	IL	Lake County	18	242	619
178	MS	Hinds County	21	91	392	NJ	Middlesex County	18	117	695
179	VA	Newport News City	21	71	476	OH	Butler County	18	137	381
180	CA	Ventura County	20	125	2,025	SC	Berkeley County	18	82	242
181	FL	Clay County	20	154	304	TX	Bell County	18	58	816
182	GA	Floyd County	20	119	72	AR	Pulaski County	17	151	479
183	GA	Stephens County	20	67	59	FL	St. Lucie County	17	146	504
184	LA	East Baton Rouge Parish	20	66	480	FL	Sarasota County	17	181	481
185	PA	Bucks County	20	142	662	NY	Monroe County	17	53	723
186	TX	Bexar County	20	93	915	SC	Aiken County	17	110	141
187	WA	Pierce County	20	125	2,183	VA	Arlington County	17	141	515
188	CO	El Paso County	19	135	1,190	VA	Norfolk City	17	74	484
189	FL	Sarasota County	19	134	481	AL	Tuscaloosa County	16	174	208
190	GA	White County	19	140	50	AZ	Pima County	16	263	1,620
191	KY	Fayette County	19	137	284	CA	San Francisco County	16	158	2,169
192	MS	Harrison County	19	92	389	CT	New Haven County	16	219	797
193	NE	Douglas County	19	102	837	GA	Camden County	16	159	252
194	NY	Onondaga County	19	123	757	NJ	Union County	16	96	708
195	SC	Anderson County	19	102	89	SC	Dorchester County	16	162	219
196	TN	Bradley County	19	80	96	GA	Bryan County	15	237	202
197	TX	Collin County	19	235	729	GA	Rabun County	15	163	73
198	UT	Salt Lake County	19	147	1,600	KS	Johnson County	15	207	692
199	FL	St. Johns County	18	118	320	MA	Worcester County	15	122	879
200	NJ	Somerset County	18	187	692	MI	Kent County	15	97	635
201	NC	New Hanover County	18	115	354	MS	Harrison County	15	98	389
202	SC	Dorchester County	18	156	219	OH	Warren County	15	374	379
203	FL	Santa Rosa County	17	114	287	TX	El Paso County	15	128	1,305
204	IL	Lake County	17	540	619	AL	Elmore County	14	103	156
205	NJ	Mercer County	17	196	676	DE	New Castle County	14	184	609
206	NY	Albany County	17	185	810	FL	Clay County	14	172	304
207	SC	Horry County	17	98	290	FL	Sumter County	14	191	382
208	SC	York County	17	179	177	GA	Butts County	14	116	47
209	TX	El Paso County	17	216	1,305	GA	Fannin County	14	263	65
210	VA	Henrico County	17	188	448	GA	Gordon County	14	71	62
211	AL	Calhoun County	16	85	105	ID	Ada County	14	287	1,850
212	GA	Franklin County	16	123	54	IN	Lake County	14	80	549
213	IA	Polk County	16	144	748	NY	Erie County	14	145	675
214	MI	Ingham County	16	98	599	NC	Forsyth County	14	153	262
215	MO	St. Louis City	16	112	475	SC	Horry County	14	126	290

** **Income Index** is measured by the relative level of median household income of a certain resident group compared to the national median income of non-movers in 2000. The income statistics used are those reported on annual tax filing to IRS.

*** **Distance** is calculated any two zip codes within the two counties and therefore may not necessarily match with the actual driving distance.

Migration Counties In/Out of Gwinnett County, GA in 2008 (contined)

Coming from			Going to							
State	County		# of	Income **		State	County	# of	Income	Distance
			Households	Index	Distance***			Households	Index	Distance
216	NJ	Ocean County	16	147	678	CA	Contra Costa County	13	378	2,131
217	TN	Rutherford County	16	139	189	FL	Marion County	13	110	349
218	VA	Hampton City	16	95	483	GA	Liberty County	13	66	209
219	AZ	Pima County	15	186	1,620	GA	Sumter County	13	57	134
220	CA	San Joaquin County	15	119	2,095	GA	Whitfield County	13	118	80
221	IN	Lake County	15	148	549	MA	Hampden County	13	74	840
222	MA	Hampden County	15	133	840	NC	Iredell County	13	145	220
223	MS	Jackson County	15	118	369	NC	Pitt County	13	72	396
224	MO	Jackson County	15	96	673	RI	Providence County	13	94	873
225	OH	Lucas County	15	131	532	SC	Pickens County	13	266	89
226	OK	Tulsa County	15	142	693	TN	Montgomery County	13	121	259
227	PA	Northampton County	15	187	672	TN	Sullivan County	13	85	202
228	SC	Aiken County	15	127	141	UT	Utah County	13	72	1,581
229	SC	Florence County	15	161	249	VA	Alexandria City	13	142	513
230	VA	Richmond City	15	93	444	CA	Fresno County	12	95	2,013
231	WA	Snohomish County	15	208	2,192	CA	San Mateo County	12	386	2,156
232	CA	Contra Costa County	14	210	2,131	CA	Ventura County	12	163	2,025
233	GA	Greene County	14	135	56	FL	Walton County	12	355	262
234	IN	Allen County	14	151	498	GA	Lee County	12	166	155
235	LA	St. Tammany Parish	14	205	428	GA	Monroe County	12	184	66
236	MN	Ramsey County	14	87	907	GA	Oglethorpe County	12	116	55
237	NJ	Camden County	14	115	645	KY	Boone County	12	298	350
238	NY	Richmond County	14	153	712	LA	Lafayette Parish	12	115	542
239	OH	Butler County	14	361	381	MD	Howard County	12	82	539
240	OH	Summit County	14	99	515	MA	Essex County	12	109	931
241	OK	Oklahoma County	14	119	771	MI	Macomb County	12	143	609
242	SC	Pickens County	14	95	89	MN	Ramsey County	12	121	907
243	TN	Montgomery County	14	104	259	MS	Jackson County	12	121	369
244	TX	Bell County	14	82	816	NJ	Monmouth County	12	159	695
245	AL	Tuscaloosa County	13	82	208	NC	Catawba County	12	133	199
246	FL	Hernando County	13	213	387	NC	Gaston County	12	136	187
247	GA	Jasper County	13	75	49	OK	Tulsa County	12	84	693
248	MA	Plymouth County	13	124	909	WI	Dane County	12	123	696
249	MI	Kalamazoo County	13	138	581	FL	Nassau County	11	237	267
250	MI	Livingston County	13	116	600	GA	Towns County	11	754	68
251	NV	Washoe County	13	136	2,005	IL	Kane County	11	310	603
252	NJ	Atlantic County	13	85	645	IL	Will County	11	100	562
253	NY	Dutchess County	13	78	780	KS	Sedgwick County	11	131	798
254	NC	Catawba County	13	57	199	KY	Fayette County	11	103	284
255	NC	Durham County	13	85	326	NJ	Mercer County	11	617	676
256	NC	Iredell County	13	130	220	NJ	Morris County	11	258	708
257	SC	Berkeley County	13	133	242	NY	Albany County	11	52	810
258	AL	Baldwin County	12	91	313	NY	Richmond County	11	167	712

** **Income Index** is measured by the relative level of median household income of a certain resident group compared to the national median income of non-movers in 2000. The income statistics used are those reported on annual tax filing to IRS.

*** **Distance** is calculated any two zip codes within the two counties and therefore may not necessarily match with the actual driving distance.

Migration Counties In/Out of Gwinnett County, GA in 2008 ... (continued)

	Coming from			Going to						
	State	County	# of Households	Income Index **	Distance ***	State	County	# of Households	Income Index	Distance
259	CA	Kern County	12	275	1,974	OR	Multnomah County	11	157	2,177
260	GA	Butts County	12	80	47	SC	Greenwood County	11	178	110
261	GA	Laurens County	12	61	122	VA	Richmond City	11	886	444
262	KS	Johnson County	12	257	692	AL	Houston County	10	213	209
263	MD	Frederick County	12	135	531	AR	Benton County	10	225	604
264	NY	Oneida County	12	149	794	CO	Boulder County	10	287	1,251
265	NC	Henderson County	12	182	130	CO	Douglas County	10	360	1,218
266	SC	Sumter County	12	57	210	FL	Flagler County	10	156	351
267	TX	Fort Bend County	12	773	761	GA	Catoosa County	10	131	91
268	TX	Hidalgo County	12	80	1,003	GA	Tift County	10	60	176
269	CA	Solano County	11	133	2,129	IN	Hamilton County	10	226	438
270	FL	Charlotte County	11	159	505	IA	Polk County	10	196	748
271	GA	Gordon County	11	86	62	MA	Norfolk County	10	274	909
272	GA	Madison County	11	92	48	MS	Hinds County	10	100	392
273	GA	Morgan County	11	130	40	NM	Bernalillo County	10	187	1,296
274	KS	Sedgwick County	11	191	798	NY	Onondaga County	10	252	757
275	LA	Caddo Parish	11	115	581	PA	Delaware County	10	101	631
276	MS	Rankin County	11	194	365	SC	York County	10	173	177
277	NC	Buncombe County	11	124	143	VA	Chesapeake City	10	182	476
278	OH	Lorain County	11	120	519					
279	PA	Lehigh County	11	228	655					
280	WI	Dane County	11	187	696					
281	AL	Houston County	10	131	209					
282	AR	Washington County	10	193	596					
283	CA	Santa Barbara County	10	297	2,062					
284	FL	Indian River County	10	127	480					
285	GA	Monroe County	10	104	66					
286	GA	Pickens County	10	224	43					
287	GA	Polk County	10	55	67					
288	GA	Putnam County	10	104	58					
289	NH	Hillsborough County	10	160	911					
290	NM	Bernalillo County	10	81	1,296					
291	NC	Johnston County	10	155	340					
292	OH	Greene County	10	208	397					
293	TX	Montgomery County	10	319	723					
294	VT	Chittenden County	10	108	935					
295	WI	Waukesha County	10	543	670					

** **Income Index** is measured by the relative level of median household income of a certain resident group compared to the national median income of non-movers in 2000. The income statistics used are those reported on annual tax filing to IRS.

*** **Distance** is calculated any two zip codes within the two counties and therefore may not necessarily match with the actual driving distance.

As part of its mission, NAR Research is working to bring Realtor® members more local information. Members may access additional state and local reports by logging in to <http://www.realtor.org/research>



- Local Market Reports
- State Fiscal Conditions and Taxes
- State Subprime ARM Performance
- State Economic Impact of Housing
- Metro Area Wealth Gain
- State/Metropolitan Existing-home Sales/Prices

The NATIONAL ASSOCIATION OF REALTORS® has carefully considered how we can best support you, our members, in these uncertain times. NAR is here to assist you and your business with the **RIGHT TOOLS, RIGHT NOW.**

